

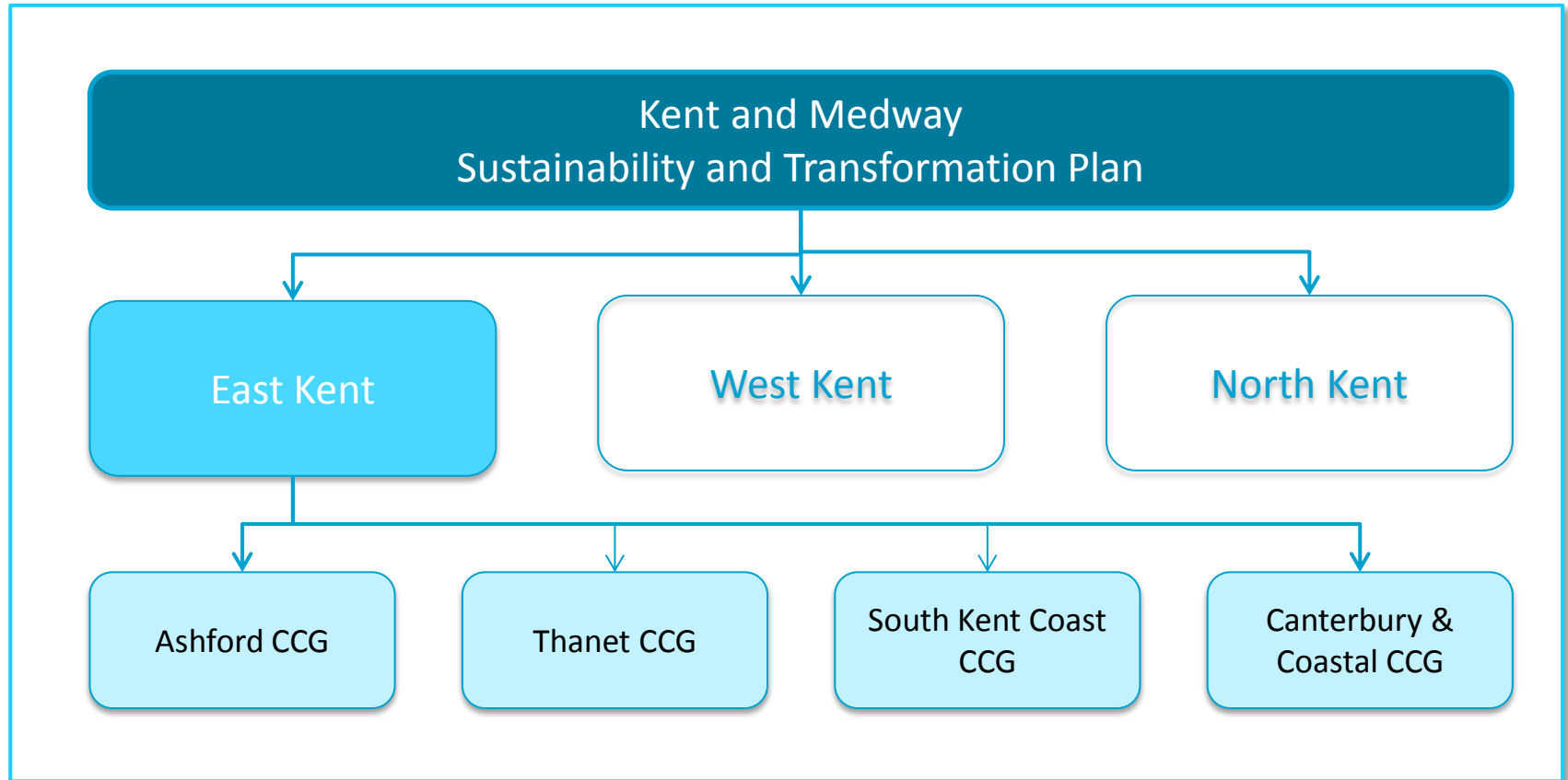
Overview and update

September 2016

The East Kent Strategy Board member organisations include:

NHS South Kent Coast CCG; NHS Canterbury and Coastal CCG; NHS Ashford CCG; NHS Thanet CCG; East Kent Hospitals University NHS Foundation Trust; Kent Community Health NHS Foundation Trust; Kent & Medway NHS and Social Care Partnership Trust; South East Coast Ambulance NHS Foundation Trust; and Kent County Council.

Delivering the *Five Year Forward View* in Kent & Medway – our Sustainability and Transformation Plan



The East Kent Strategy Board

- Established in September 2015 to spearhead a new 'whole system' drive to transform health and care services
- Membership – all organisations involved in planning, provision and delivery of health and care services in east Kent and a Patient and Public Engagement Group
- East Kent are an early implementer of the K&M Sustainability and Transformation Plan.
- Key achievements to date:
 - Clear understanding of the demand, capacity and financial profile of health and social care in east Kent
 - Technical and narrative case for change for change agreed
 - Public case for change launched
 - 4 large clinical workshops have taken place to describe how care should look in the future.

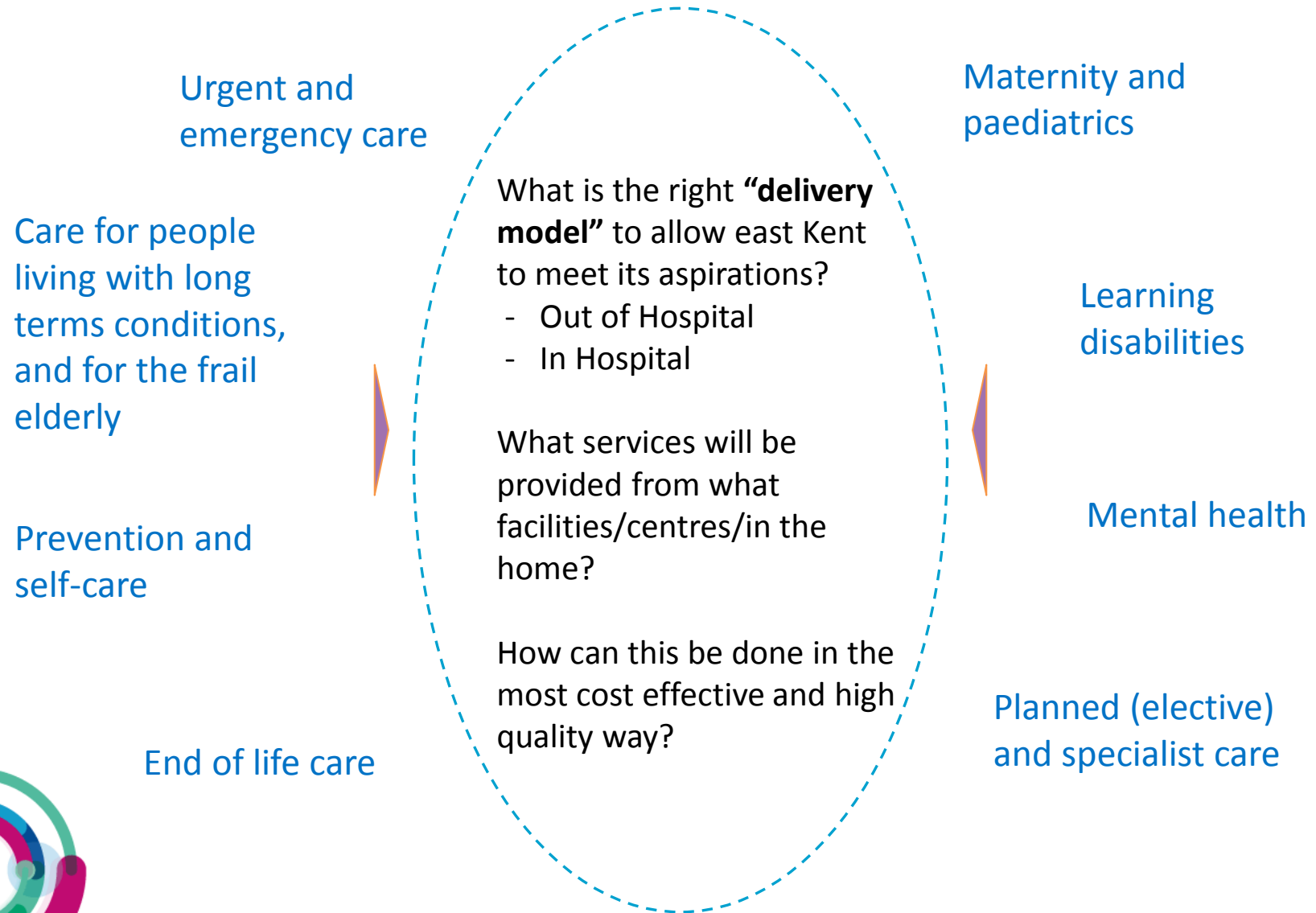


What does the future look like?

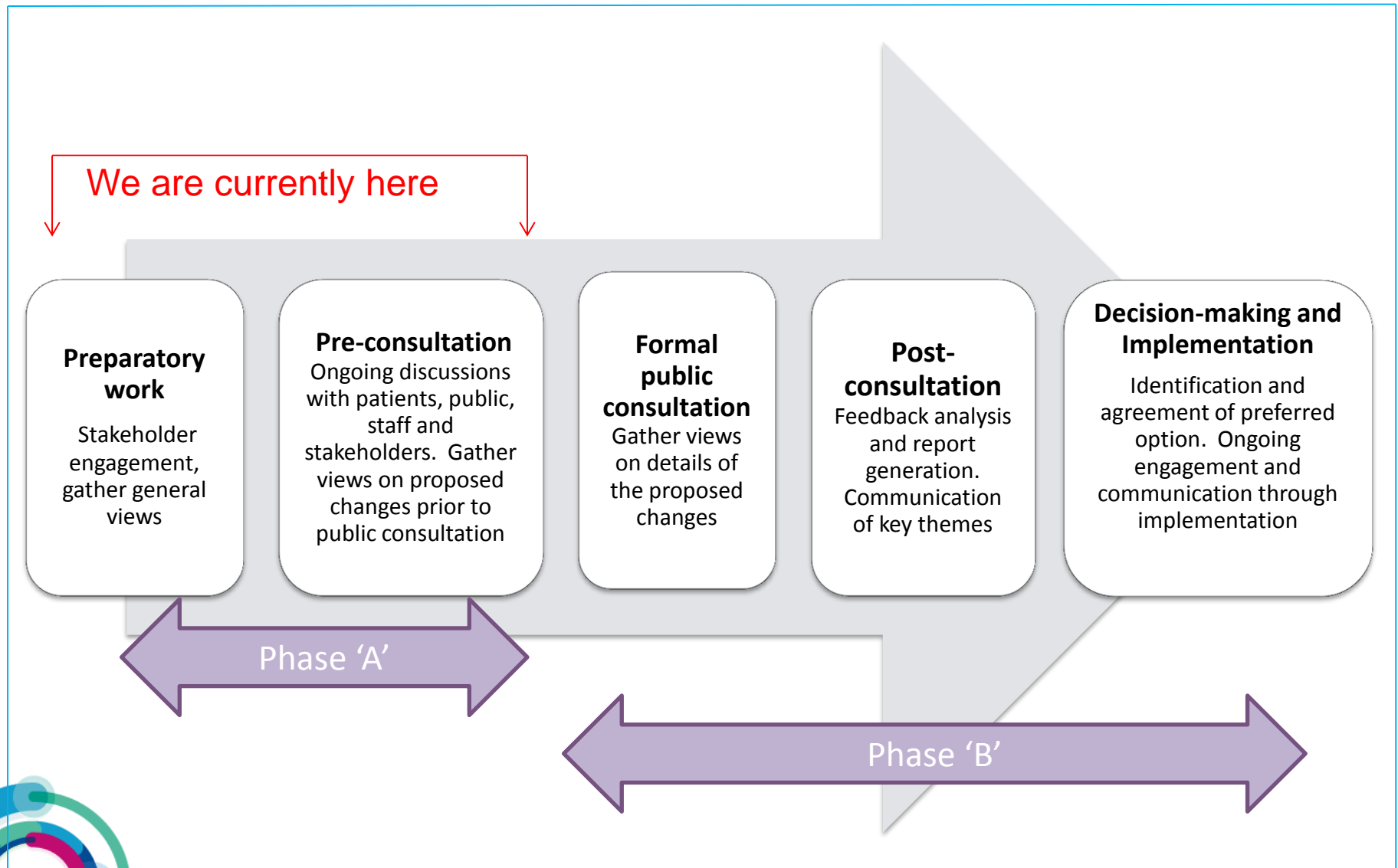
- **Out of hospital integrated health and care services:**
 - List based, grounded in primary care
 - Maximum scope for the team around the patient's GP
 - Social services, voluntary sector and NHS working together
 - Secondary care (physical and mental health) expertise to integrate with primary care out of hospital where this improves care and efficiency
 - Out of hospital provision through 'multispecialty community providers' and local 'hubs'
- **Smaller acute hospitals focused on specialist care:**
 - Safer, more specialist, secondary care services, with access conducive to decrease health inequalities



To deliver our aspirations for good care, the right delivery models need to be in place



Engagement process: an overview



Current work

- The East Kent Clinical Forum has now agreed the outputs of the 4 clinical workshops as the basis for the future models of care.
- Based on the outputs of the workshops, we are developing resource packs which will be used to engage with different staff groups across all organisations.
- We are engaging with the South East Clinical Senate to agree the terms of the review they will need to undertake at the end of October.
- We have had a positive follow up meeting with NHS England regarding the Stage 1 Assurance Process.
- Through August we have run several public focus groups focussing on discussing new models of care.



Next steps

- Using co-designed evaluation criteria we will move to a short list of possible options for the way we deliver services in the future across east Kent, with on-going engagement.
- We are developing a detailed understanding of the out of hospital models of care and the changes that will enable to the current model of in-patient care.
- We anticipate a formal consultation on the proposals at the end of this year (2016).

